

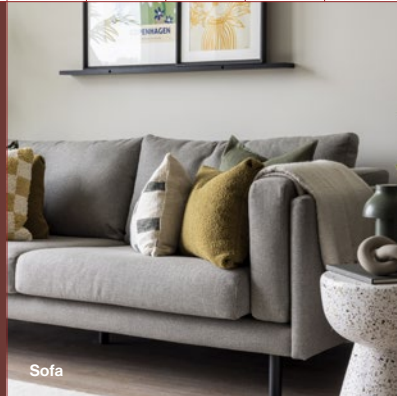
HOVE GARDENS

ETHEL ST.

1 bedroom
apartments

Type 1
From 663 sq ft

Furniture package



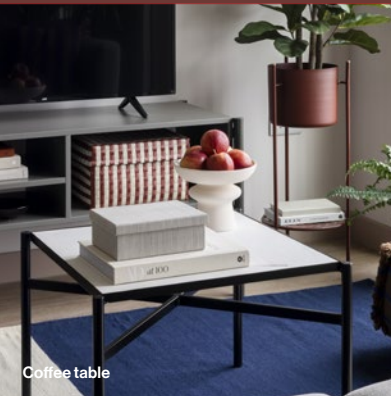
Sofa



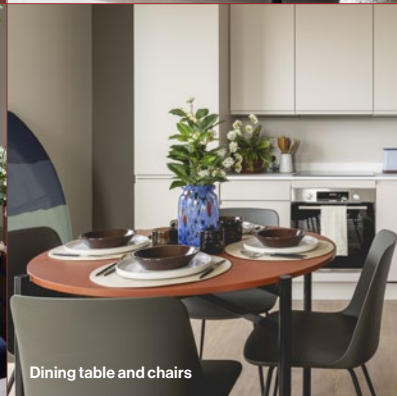
TV cabinet



Armchair



Coffee table



Dining table and chairs

Our interior designers have put together a bespoke furniture package that's already in place when you move in.



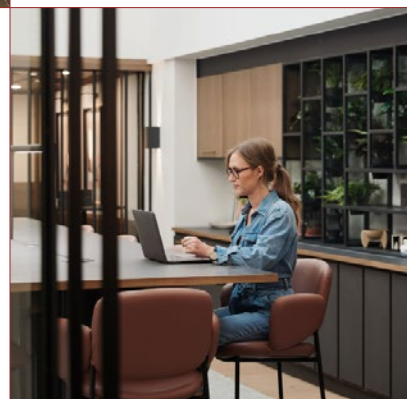
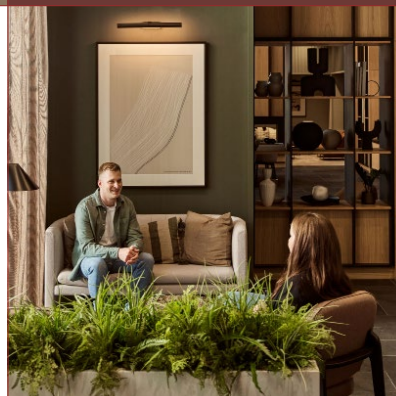
King-sized bed and bedside tables

Amenities and added extras

All homes in Hove Gardens come with these amenities and extras for free. Some may incur additional costs and licences. Please speak to the On-site Team.

- Bespoke high-quality furniture included
- Free superfast broadband
- Flexible contracts with no letting fees
- On-site team on hand to help
- Plenty of secure on-site bike storage
- Rooftop terraces
- Work spaces
- TV lounge
- Freedom to decorate
- Pet wash

Indicative pictures of amenities from previous L&G sites



Looking to join us? Please call **01273 069908** to speak to one of the team.

HOVE GARDENS

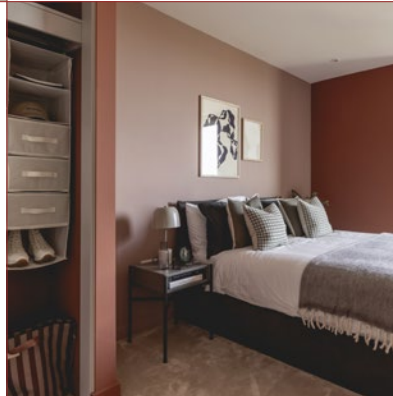
ETHEL ST.

1 bedroom
apartments

Type 1
From 663 sq ft



Inspired Design.



Specification

Living room

Open plan living area with wooden flooring. Sofa, coffee table, TV unit with storage and dining table & chairs.

Kitchen

Fully fitted kitchen and utility cupboard, appliances include fridge with freezer compartment, Beko oven and hob, dishwasher and washing machine.

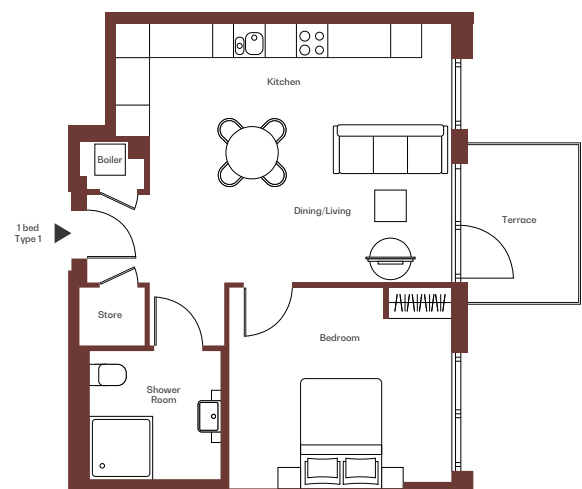
Bedroom

King size ottoman bed with storage and bespoke bedside tables, built-in wardrobe with floor to ceiling mirrors.

Bathroom

Ensuite bathroom with heated towel rail.

Floor plan



Looking to join us? Please call **01273 069908** to speak to one of the team.